

# USER MANUAL

(Mechanical Concealed Cistern)

## M41

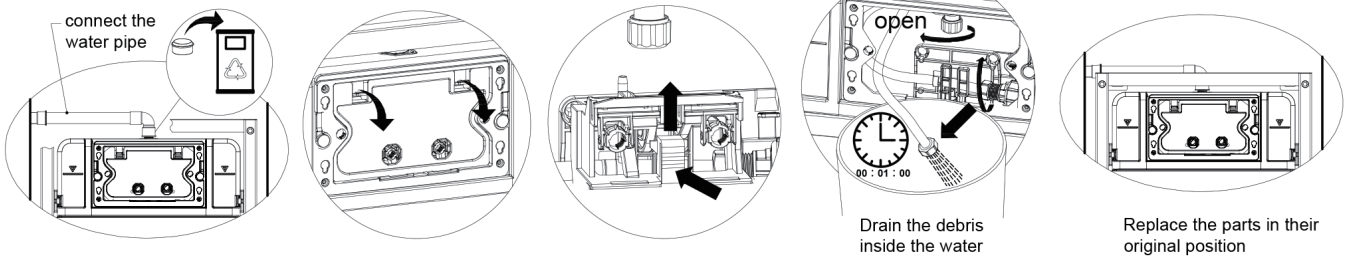


# Hidden tank installation instructions(hanging toilet)

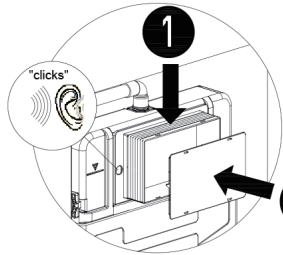
Parts List		Product specifications	
<p><b>Tips:</b> Please install this product before paving tiles. Before installing, confirm the installation location and confirm the horizon after the completion of the project. Draw the horizon on the installation wall. This product is installed as a baseline for the installation height.</p>		<div> <b>Product specifications</b> <p>Note: Slim type can be installed in the 116mm thick wall.</p> </div> <div> <b>Standard type specifications</b> <p>Note: Standard type can be installed in the 135mm thick wall.</p> </div>	
Installation Steps			
<b>1.False wall (half false wall)</b> <p>false wall    half false wall</p> <p>(1) the wall can be brick or gypsum board. (2) reserved for water pipes. (3) false wall installation tank location at least 520mm wide.</p>		<b>2.Adjustment before Installation</b> <div> <b>1</b> <p>Measure the distance L</p> </div> <div> <b>2</b> <p>Install the telescopic arm    Adjust the leg</p> </div> <div> <b>3</b> <p>Press the adjustment sheet, adjust the center distance to L.</p> </div> <div> <b>4</b> <p>Adjust the arm</p> </div> <div> <b>5</b> <p>Assemble the toilet screw and protect cover</p> </div>	
<b>3.Install the cistern</b> <p>horizontal correction vertical correction correction    mark the punching hole    punch Ø10 hole    fix the cistern    assemble the toilet screw and protect cover</p>			

NOTE: the size unit is mm,  $\nabla$  = the floor height after the project. The fill water pressure and stop filling pressure is between 0.01MPa-2.0MPa, water temperature: 2°C-45°C, flush volume can be adjustable.

#### 4.connect the water inlet



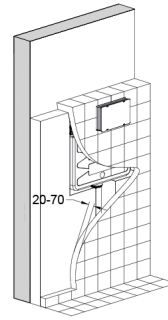
## 5. preparation before paved



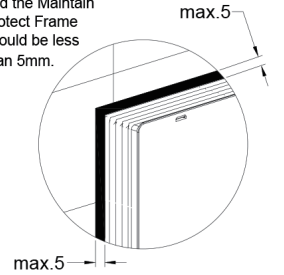
Before paving, please check the water supply and cistern, ensure no water leakage in water supply and cistern.

**Check method:**  
Switch on the angle valve and full fill the cistern with water. Watch and make sure there is no leakage between the cistern and the connection pipe. Then switch off the angle valve and drain the cistern.

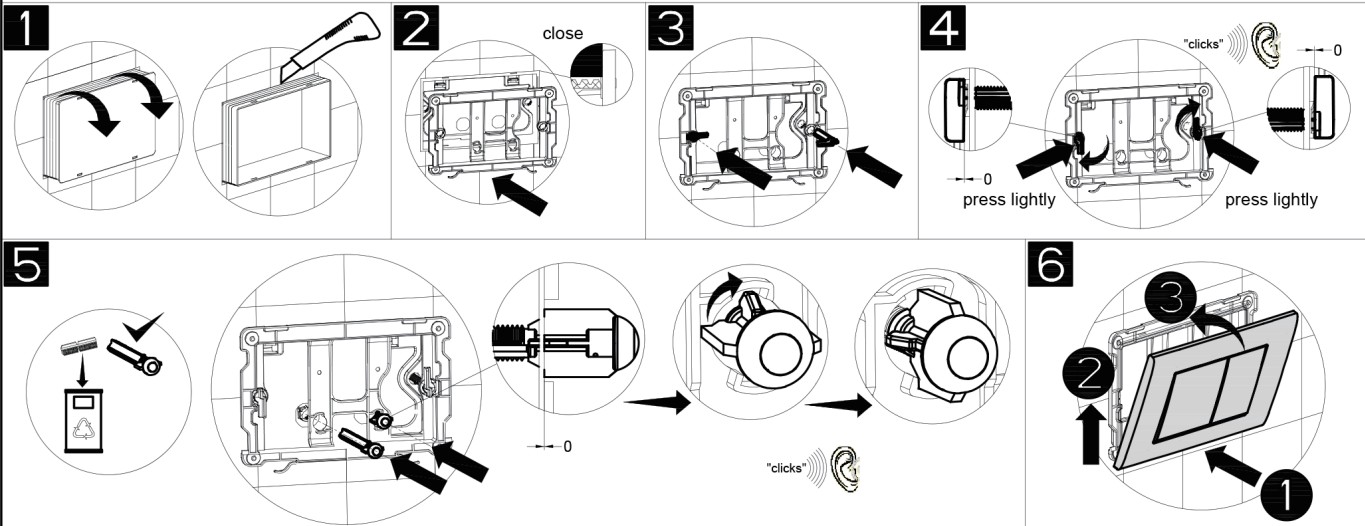
6.paved



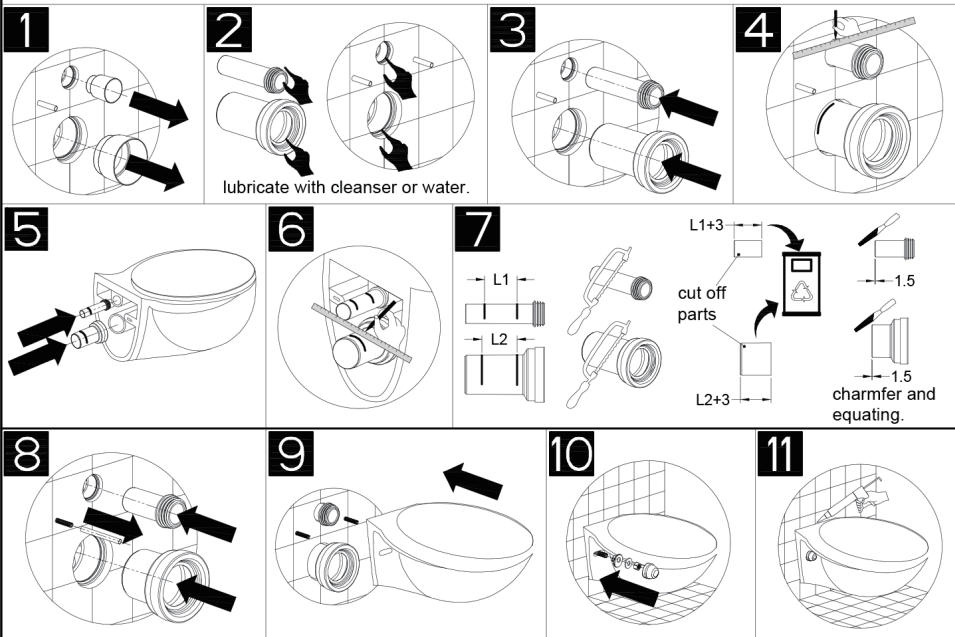
Note: The gap between the tiles and the Maintain Protect Frame should be less than 5mm.



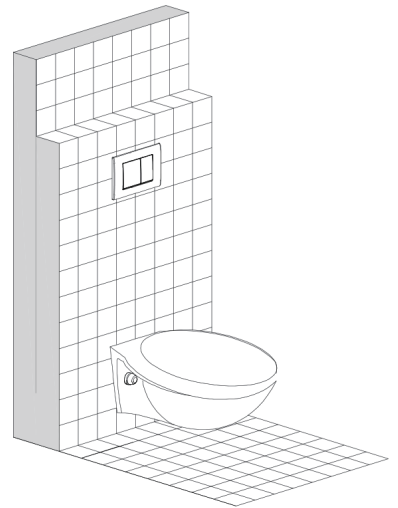
## 7. Install the flush plate



## 8. Install the toilet

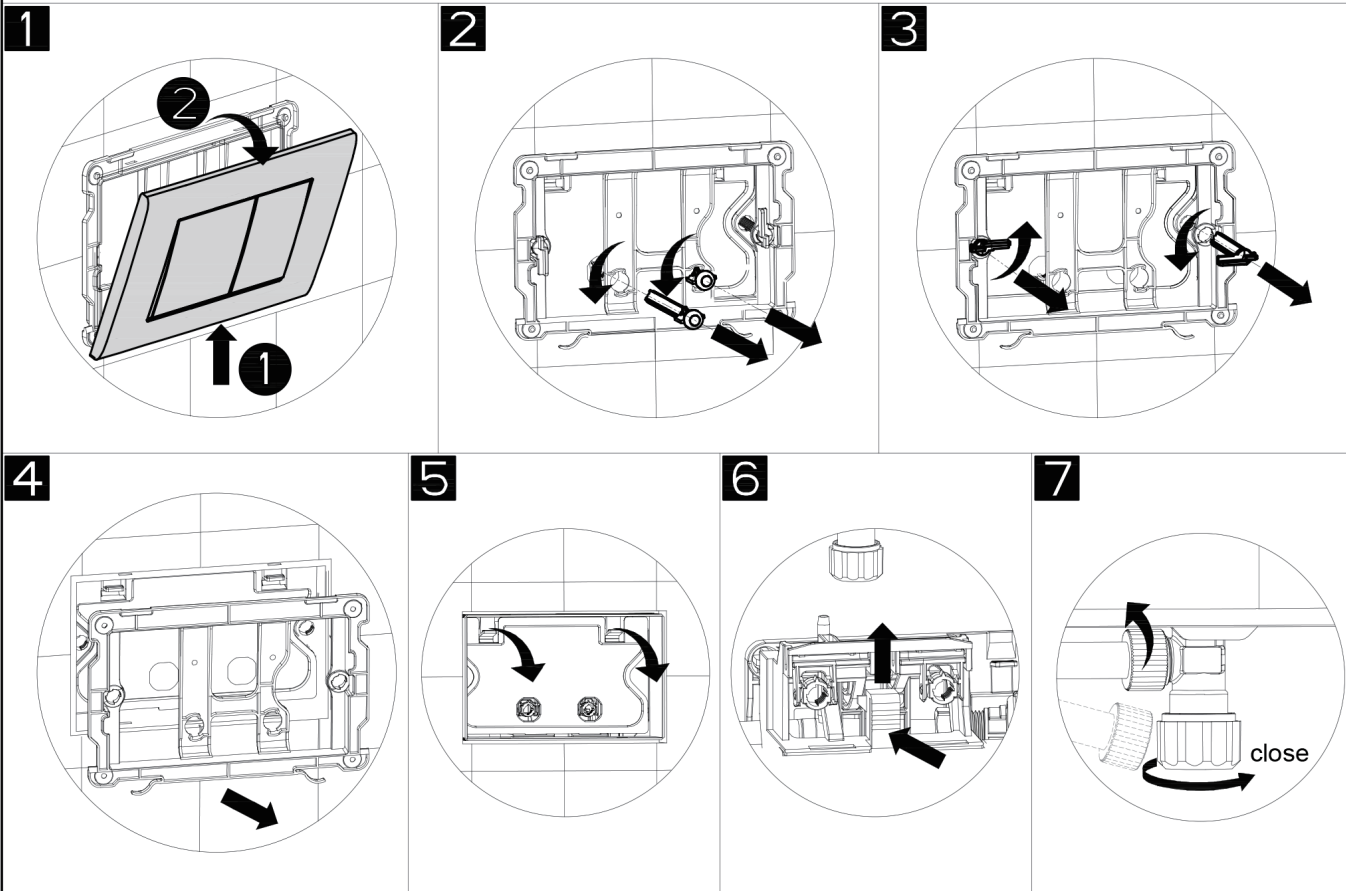


9.installation finished

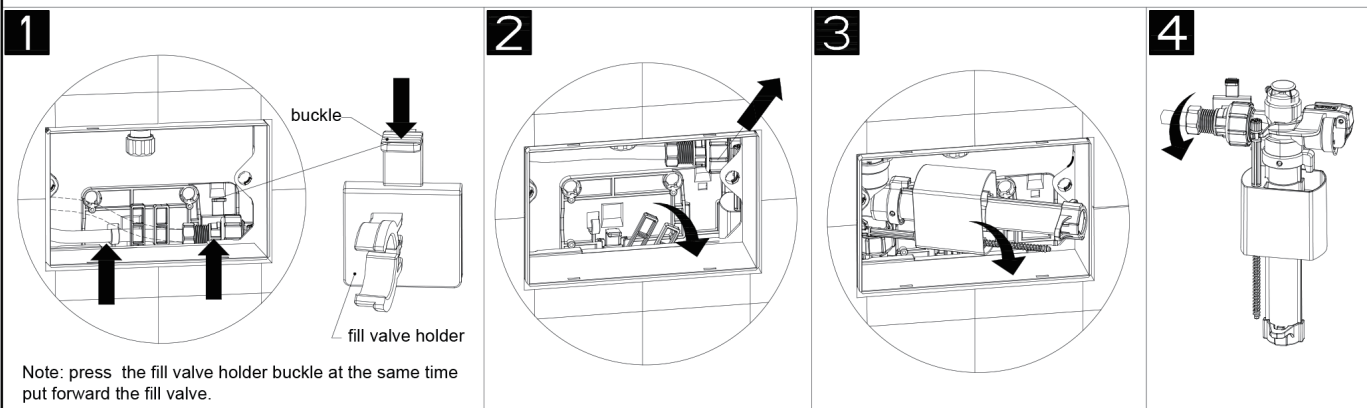


# Concealed Cistern maintenance guide

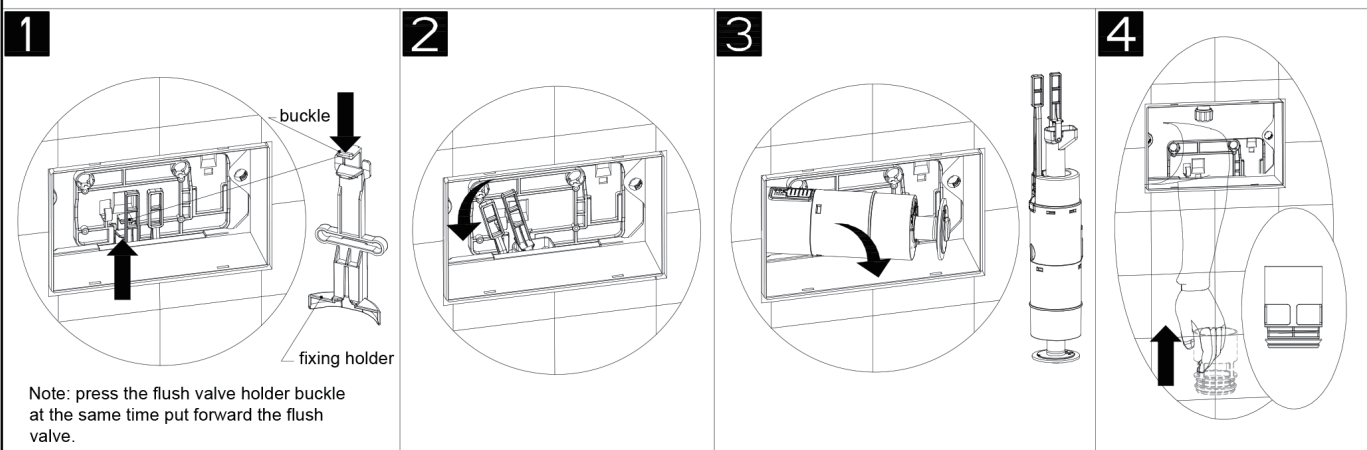
## Maintain window parts disassemble



## Disassemble the fill valve



## Disassemble the flush valve

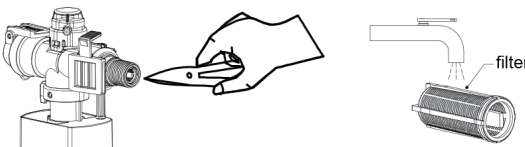


Note: reversing the installation procedure is the disassembly. Before disassembling, please carefully make sure the position of each component, adjust or replace it.

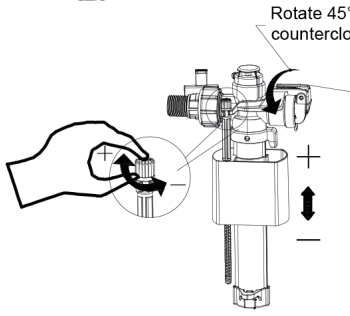


# Common Trouble and exclusion

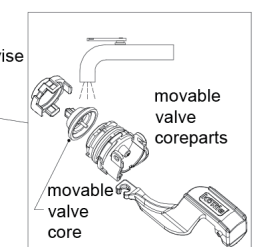
Common Trouble and exclusion of fill valve		
Trouble	Reason	Trouble shooting
water does not filling	The filter is clogged with impurities	Clean the filter
Water level is too low or too high	The fill valve float is too low or too high	Regulate the water level
Can not seal the water	Movable valve core blocked cause the fill valve can not seal the water	Clean the movable valve core parts



①remove the filter by sharp-nose plier and clean it

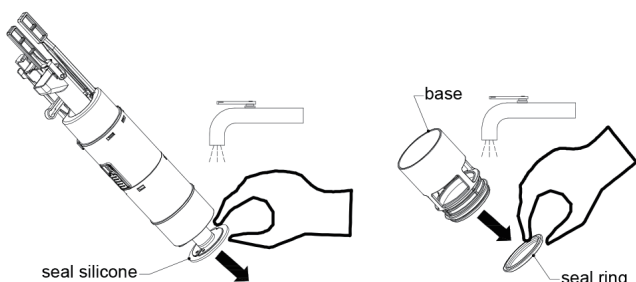


②Turn the screw to adjust the water level



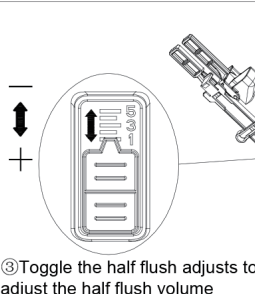
③Rotate 45°counterclockwise to remove the active valve core parts, remove the active valve core and clean.

Common Trouble and exclusion of flush valve		
Trouble	Reason	Trouble shooting
NO flushing	Flush button stick too short or break	Change the flush button stick
Tank leakage	Debris on the seal silicone	Clean the seal silicone and base
	Seal ring failure	Change the seal ring
	The flush valve working with some block	Clean the debris

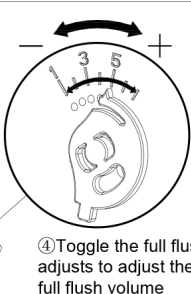


①clean the debris or change the seal silicone

②clean the base or change the seal ring



③Toggle the half flush adjusts to adjust the half flush volume



④Toggle the full flush adjusts to adjust the full flush volume

Note: If you have any other problems or still can not be resolved with the correct operation of the above methods, please consult professional and technical personnel.

## Energy saving and environmental protection concealed cistern

Saving water, everyone is responsible As long as we all pay attention to saving water, water shortage will be away from us, our lives will be stable, harmonious; the environment will be beautiful and comfortable. Saving water, power in the contemporary, Lee in the future! In order to avoid more water shortage, please cherish every drop of water!

In daily life, the traditional hidden flushing water tank, in each flushing process need to discharge more than 9 liters of water, waste a lot of water resources. After years of unremitting efforts of our company's R & D personnel and countless experiments, we developed energy saving and environmental protection hidden water tanks with adjustable capacity of 3-4.5 liters. The water saving rate was over 50% to save water as much as possible. Users you in the use of energy-saving environmental protection hidden tank has been for the community to save a lot of water resources for environmental protection to make a contribution.

Thank you for choosing energy saving and environmental protection concealed cistern

### Warranty Card

All products are in accordance with ISO-9001 quality system certification management standards for production, product testing are in line with or exceed the national standard, so the company's energy-saving hidden water tank as long as the correct installation and normal use, can enjoy the following service:

First, the product warranty for five years, warranty period due to product quality problems caused by any failure, the company will give guidance or replacement parts, warranty, please produce proof of receipt.

Second, if due to improper use or other causes damage, the company will also repair or replace parts for you, only charge the cost.

Third, after the warranty period, such as failure, the company will also carry out maintenance and replacement for you, to ensure that you can use long-term satisfaction, only charge the cost of spare parts.

Fourth, when you encounter product failure, can not be resolved, please contact your local dealer or call the company's after-sales service department, we will in the shortest possible time to provide you with services.

Tips: This card should be kept properly, if lost, will be considered beyond the scope of the warranty to deal with!

certificate of qualification

Product Name: Energy saving concealed cistern

Production standards: GB26730-2011

Inspectors:

